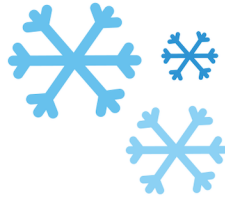


# COLD Desert

## Fun fact for kids



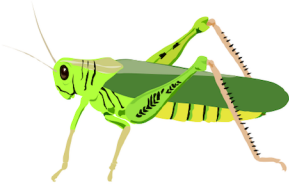
Cold deserts receive very little precipitation each year.



A cold desert is a desert with freezing temperatures and often snow or ice.



Some cold deserts have permafrost, where the ground stays frozen year-round.



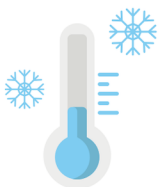
Certain insects in cold deserts produce a natural antifreeze to survive.



The Gobi Desert is home to sand dunes, mountains, and dinosaur fossils.



Few people live in cold deserts, but some indigenous groups have adapted to the harsh conditions.



The coldest temperature ever recorded on Earth was in Antarctica's cold desert:  $-89.2^{\circ}\text{C}$



Cold deserts often have clear, blue skies due to the dry air.



cold deserts can have stunning wildflower blooms after rare rains.



Many cold deserts have a layer of permafrost, where the ground remains frozen year-round.



Despite the icy environment, there are ice-free areas in cold deserts, known as nunataks



The most well-known cold deserts are found in the polar regions, including Antarctica and the Arctic.