

Galaxy

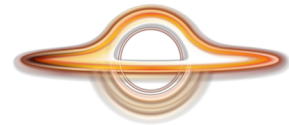
Fun fact for kids



Galaxies have billions of stars; the Milky Way has 100-400 billion.



Galaxies come in different shapes: spiral (like the Milky Way), elliptical, and irregular.



Many galaxies, including our Milky Way, have supermassive black holes at their centers.



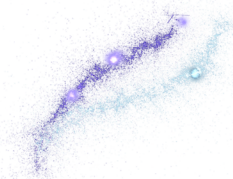
Galaxies cluster. Milky Way in Local Group with 54 others, including Andromeda, set to collide.



Galaxies can and do collide. When this happens, they can merge to form a new galaxy.



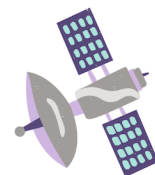
Galaxies hold stars of all ages, from ancient to forming ones.



Spiral galaxies, like the Milky Way, are active sites of star formation, particularly in their spiral arms.



Dark matter, 85% of a galaxy's mass, invisible and gravitational.



Galaxies drift apart as universe expands, observed by Hubble, backing Big Bang.



The Voyager 2 spacecraft is the only one to have visited Neptune.



Many well-known galaxies were cataloged by the French astronomer Charles Messier in the 18th century.



Galaxies rotate, but the stars in them do not all move at the same speed.