

South Pole

Fun fact for kids



The South Pole is located on the continent of Antarctica, at the bottom of the Earth.



the South Pole sits on a thick ice sheet covering a landmass.



Norwegian explorer Roald Amundsen was the first person to reach the South Pole on December 14, 1911.



Emperor penguins, the tallest and heaviest of all penguin species, are found here.



No one lives permanently at the South Pole



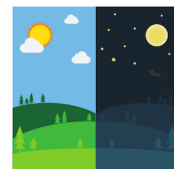
Despite all the ice, Antarctica is technically a desert because it gets very little precipitation.



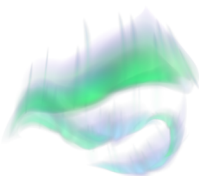
The South Pole is one of the coldest places on Earth, with temperatures dropping below $-73^{\circ}\text{C}..$



The South Pole is at an altitude of about 2,835 meters because of the thick ice sheet.



The South Pole has six months of daylight and six months of darkness.



The South Pole offers a stunning view of the Aurora Australis, or Southern Lights.



The South Pole is known for having some of the cleanest air in the world



The South Pole technically lies in all time zones, but the station operates on New Zealand time for logistical reasons.